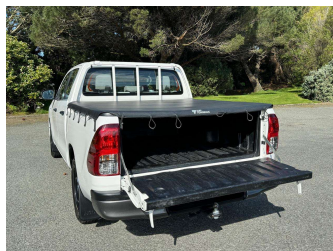
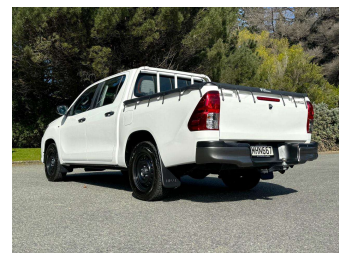


2019 Toyota Hilux S 2WD D/cab 2.8TD man



Purchase Price
Includes GST, Registration & Licensing

\$24,995

DRIVE AWAY FROM terms & conditions apply

3 YEAR MECHANICAL WARRANTIES AVAILABLE

Top features
None Listed

Body Style
4 door, Ute

Odometer
115,559 km

Engine
2755 cc, Internal Combustion

Fuel Type
Diesel

Transmission
Manual, Rear Wheel

Wheels
-

VIN
MROJA3CDX00091331

Interior
-

Safety



Based on 2023 UCSR rating for 15-19 models

Reg No.
MHN667

Ext Colour
White

History
NZ New, 1 owner

Seats
5 seats

CO2 Emissions
★ ★ ☆ ☆ ☆ ☆
244 grams/km

Energy Economy
★ ★ ☆ ☆ ☆ ☆
**Annual fuel cost of \$3,640
9.2L per 100km**

Cost per year is an estimate based on diesel price of \$2.00 per litre and an average distance of 14000 km. Includes Road User Charges (RUC). Emissions and Energy Economy figures standardised to 3P WLTP.

Stock ID: 2806